



# EVENTS & PRIVATE HIRE

the refinery

*Bankside*

110 Southwark Street, London SE1 0TF  
[bankside.therefinerybar.co.uk](http://bankside.therefinerybar.co.uk)  
0845 468 0186

# ALL ABOUT US

## OVERVIEW

Located in the landmark Blue Fin Building on Southwark Street, just behind the Tate Modern & in the heart of London's Bankside, The Refinery comprises a destination bar & open-plan restaurant that exudes industrial sophistication. In keeping with fast-paced London life, The Refinery is open from 9am on weekdays and 10am on weekends until late & is designed to be an all-day & evening venue which adapts to your mood – whether it's a business brunch, social drinks, a late-night supper with friends or a private party.

## FOOD & DRINK

Menus, inspired by seasonal, British food & crafted by Executive Chef Robert Mitchell, are influenced by the latest trends here in London & across the globe. Offering a range of nibbles, sharing boards, gourmet sandwiches & burgers as well as hearty mains & zesty salads, The Refinery's menu is peppered with exciting dishes. The Refinery continues to push the boundaries of innovative mixology & experimentation with cocktails from old classics & well-loved favourites to the new, the unexpected & the surprising. The wine list is equally impressive with a variety of vintages from both new & old worlds whilst ice-cold prosecco & champagne is well stocked to cater for all manner of celebrations.





## STYLE

Floor to ceiling glass walls invite guests in & a host of flexible areas & eclectic styles suit any occasion. The buzz & culinary theatre of the open plan kitchen can be enjoyed from the comfort of the restaurant while the luxury of space allows diners to enjoy quieter corners for business lunches or corporate meetings. Hosting up to 550 guests, The Refinery has been cleverly designed with areas including a mezzanine level, classic dining & refectory style tables & curtained circular booths alongside high drinking tables & bar stools. For smaller groups, enjoy a meeting or catch-up on the soft, tan leather chairs & tables within olive green & jet black retro lighting. A wine wall provides a striking design element above the bar.

## FILMING & PHOTOGRAPHY

Opulently appointed with one-of-a-kind pieces & statement interiors, The Refinery is regularly used for photoshoots & filming as an elegant scene-stealing setting, situated just south of the Thames along London's Southbank & amongst a midst of high-profile creative & broadcast media offices.

## EVENTS

The Refinery's spacious interior allows a host of private events, launches & parties to be catered for from small groups to full venue hire for up to 550 guests (or 235 seated). The private dining area perched on the mezzanine level allows up to 12 guests to dine in exclusive style while looking down on the bustling bar below. A stunning al fresco terrace provides a further 120 covers in warmer months whilst music & drinks flow until 1am on Thursday & Friday nights.

Every event is unique which is why we give you the option to create your own bespoke drink & canapé packages. If you have trouble deciding, our favourite recommended packages are there to help. With interactive experiences for exciting events – from mixology masterclasses through to tipple tastings – choose from a range of packages to suit all tastes & budgets; or allow our dedicated events planners to sprinkle a little magic on the spark of an idea.





# LOCATION

The Refinery is conveniently located within walking distance of three Underground stations – Southwark, London Bridge & Blackfriars – offering ease of access to four tube lines (District, Circle, Jubilee & Northern) & National Rail services including Thameslink, Southern & Southeastern services, ensuring a seamless connection throughout central London & towards the suburbs in various directions.

## CONTACT DETAILS

**the refinery**

*Bankside*

110 Southwark Street,  
London SE1 0TF

T: 0845 468 0186

E: [info@therefinerybar.co.uk](mailto:info@therefinerybar.co.uk)

[@TheRefineryBar](https://twitter.com/TheRefineryBar)

[bankside.therefinerybar.co.uk](http://bankside.therefinerybar.co.uk)

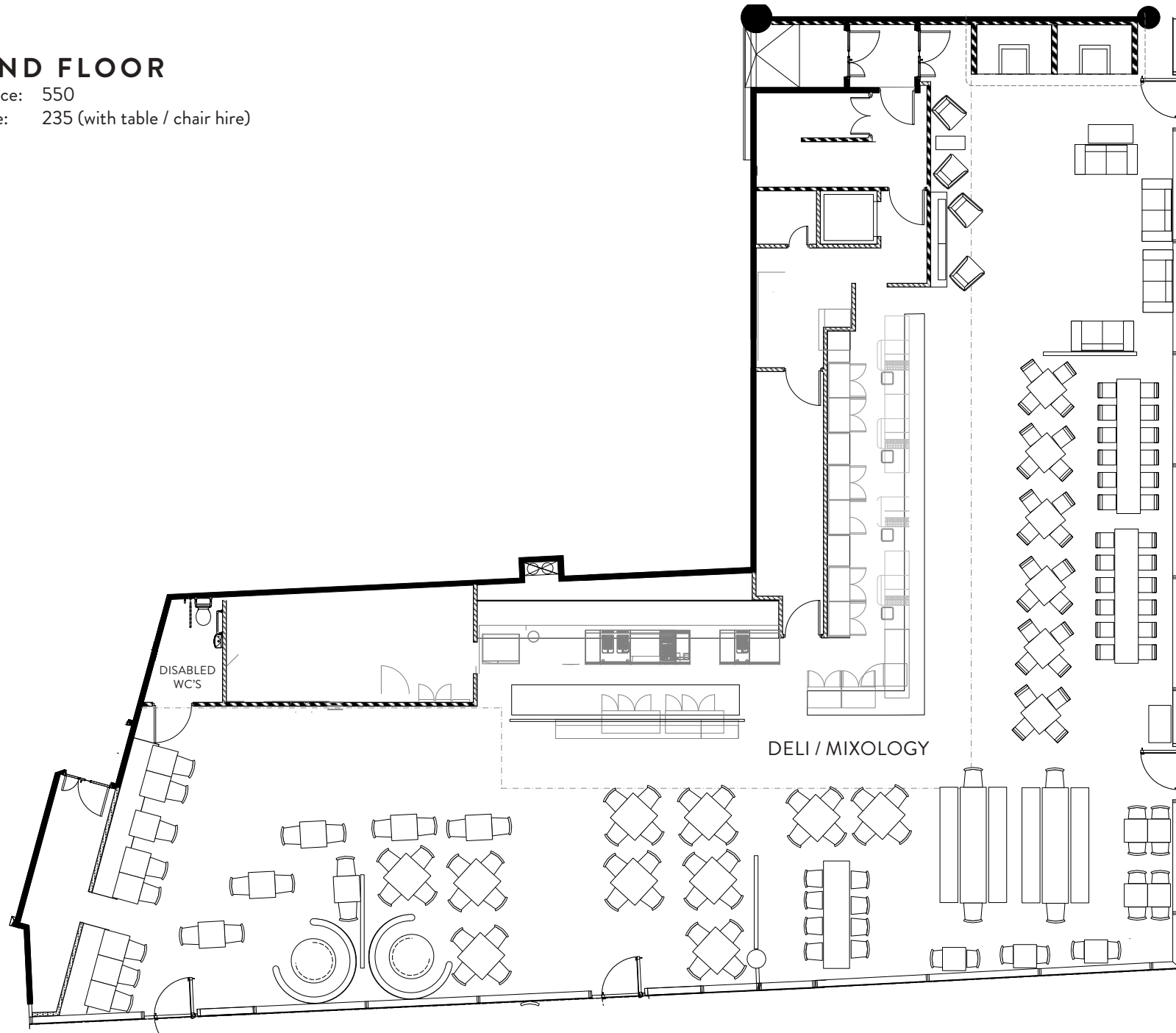




# GROUND FLOOR

Standing Space: 550

Seated Space: 235 (with table / chair hire)

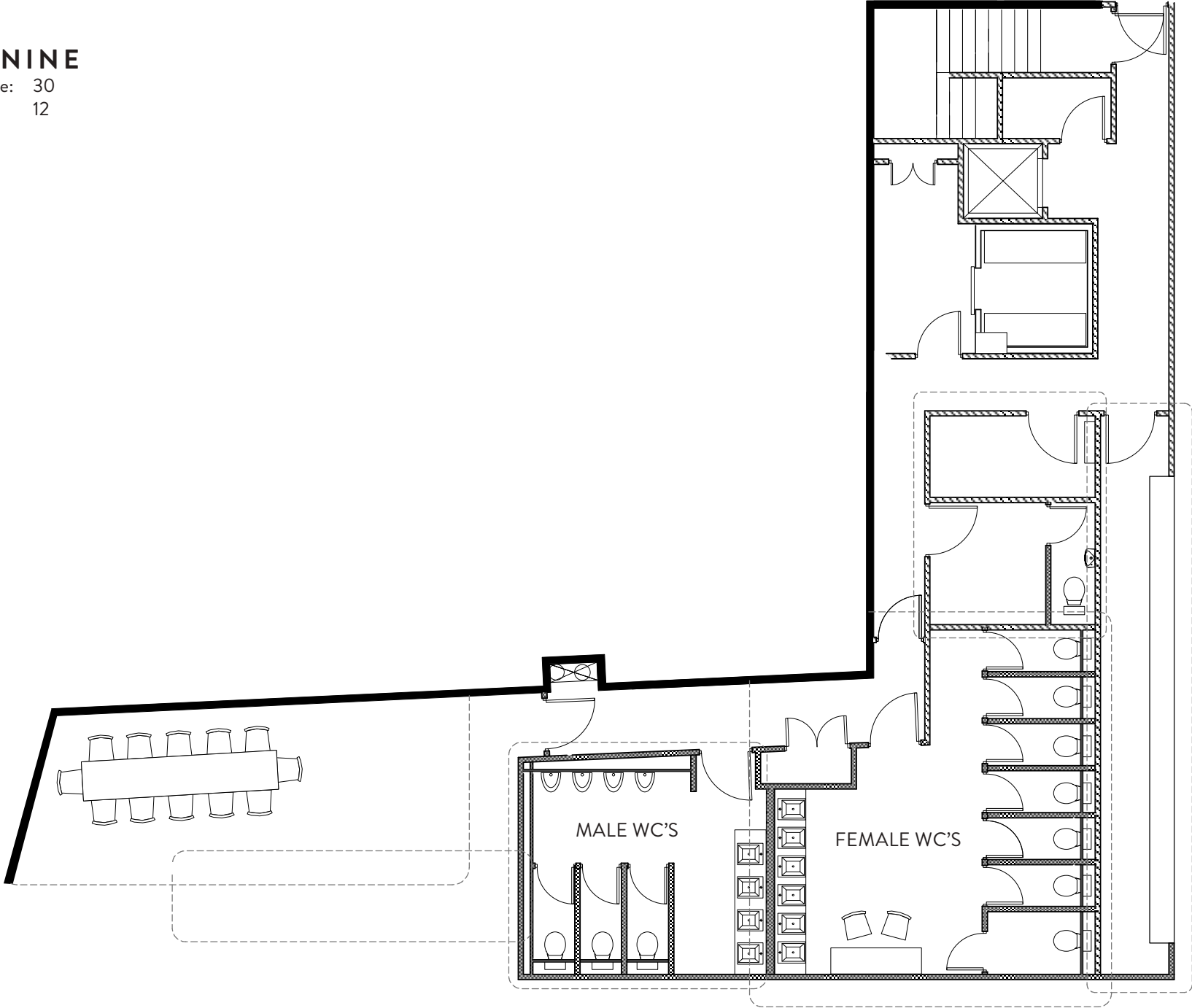




# MEZZANINE

Standing Space: 30

Seated Space: 12



# THE D&M COLLECTION

DRAKE & MORGAN BARS & RESTAURANTS

**the refinery**

*Bankside*

110 Southwark Street, London SE1 0TF

[bankside.therefinerybar.co.uk](http://bankside.therefinerybar.co.uk)

0845 468 0186